

A 93671

Poing, München - Ost, approx. 10.180 sqm  
warehouse and logistics space for rent



### Parameters

City	Poing
Warehousing space sqm	9,670.00
Hall/Production space, subdividable from m <sup>2</sup>	2,620.00
Office space sqm	510.00

### Overview of spaces

Hall/Production space m <sup>2</sup> .....	9,670.00
Office space m <sup>2</sup> .....	510.00
<hr/>	
Total space m <sup>2</sup> .....	10,180.00

### Object description

- Einheit 1:
  - ca. 2.620 m<sup>2</sup> Hallenfläche
  - ca. 160 m<sup>2</sup> Bürofläche
  - 8 Rampentore mit Überladebrücken - Crossdocking möglich
  - Hallenhöhe ca. 6,30 m UKB
  - Sprinkleranlage
  - hohe Bodentraglast
  - hohe Stromanschlusswerte
  - beheizt
  
- Einheit 3:
  - ca. 7.050 m<sup>2</sup> Hallenfläche
  - ca. 350 m<sup>2</sup> Bürofläche
  - 24 Rampen mit Überladebrücken - Crossdocking möglich
  - Hallenhöhe 9,50 m UKB
  - Sprinkleranlage
  - hohe Bodentraglast
  - hohe Stromanschlusswerte
  - beheizt
  
- die Büroflächen werden renoviert und können in Teilflächen angemietet werden
- Räume veränderbar, Rampe, Hallenhöhe

### **Outdoor space**

Drive-around possible Ja

### Location

Connection to A 94

Line/s S-Bahn-Linie S2, Haltestelle "Poing"

### Remark

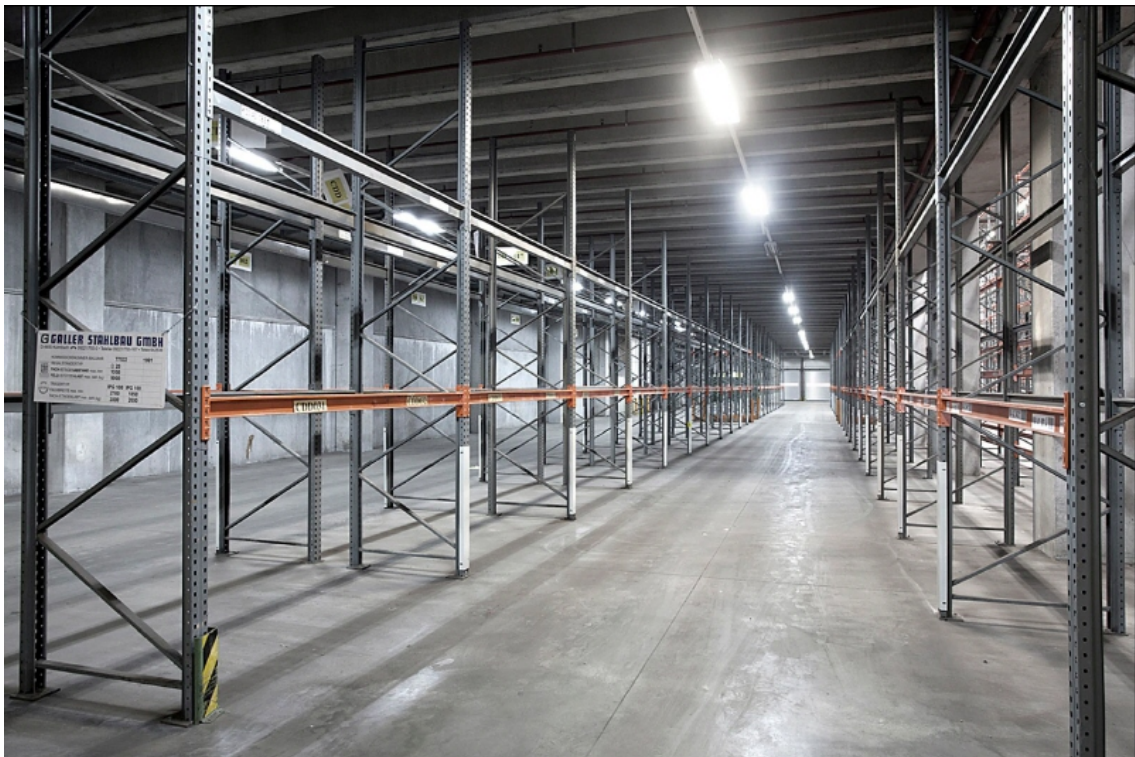
We want to stress out that in case of conclusion of the buying contract the buyer of the property has to pay to Realogis Investment GmbH a commission of 3 % of the complete notarized purchase price plus VAT. The commission is earned with the conclusion of the buying contract and payable after receipt of invoice.

The information concerning the space are approximate values.

We kindly ask you for understanding that we have received all information in this proposal from the landlord and we assume no liability for totality and correctness.



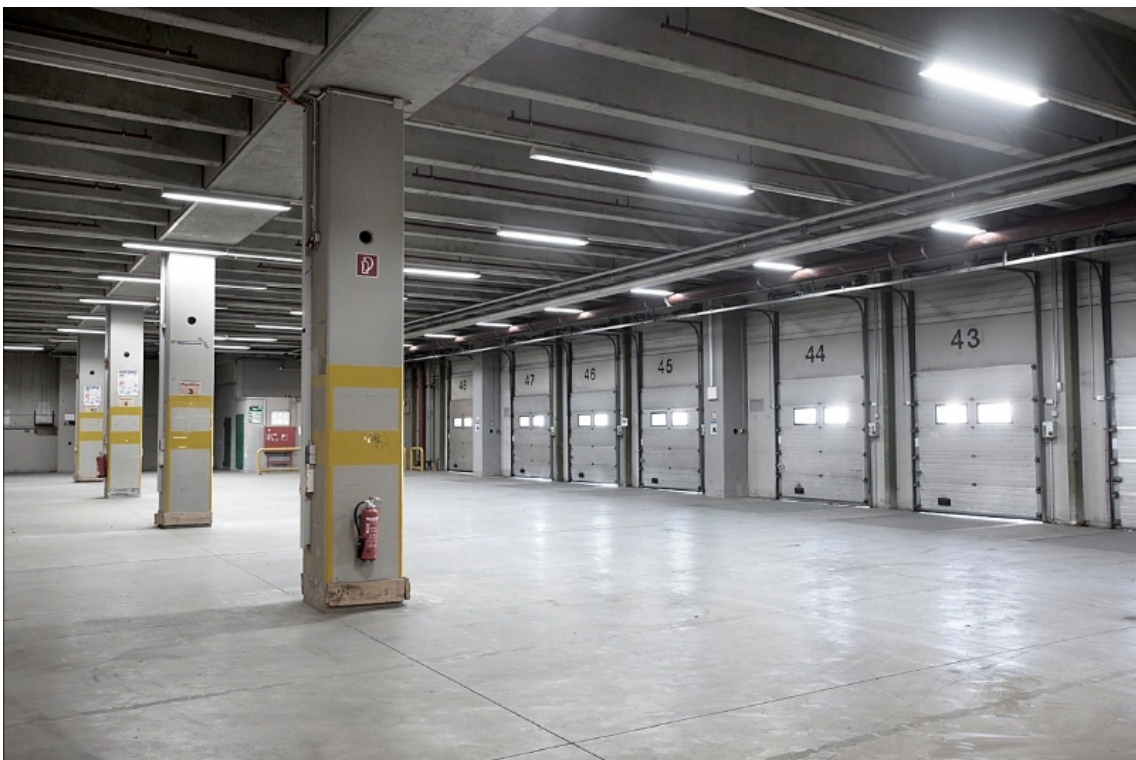
Außenansicht



Innenansicht Halle 1



Innenansicht Halle 2



Innenansicht Andienung